

# SOFTWARE FOR MEASURING ARMS

## CODE CMM-ARM-DMIS

- Simple and intuitive user interface
- Drag-and-drop operation for simplicity and efficiency
- Standard DMIS kernel with self-learning programming function
- Multilingual design
- The tolerance algorithm supports ISO and ASME Y14.5

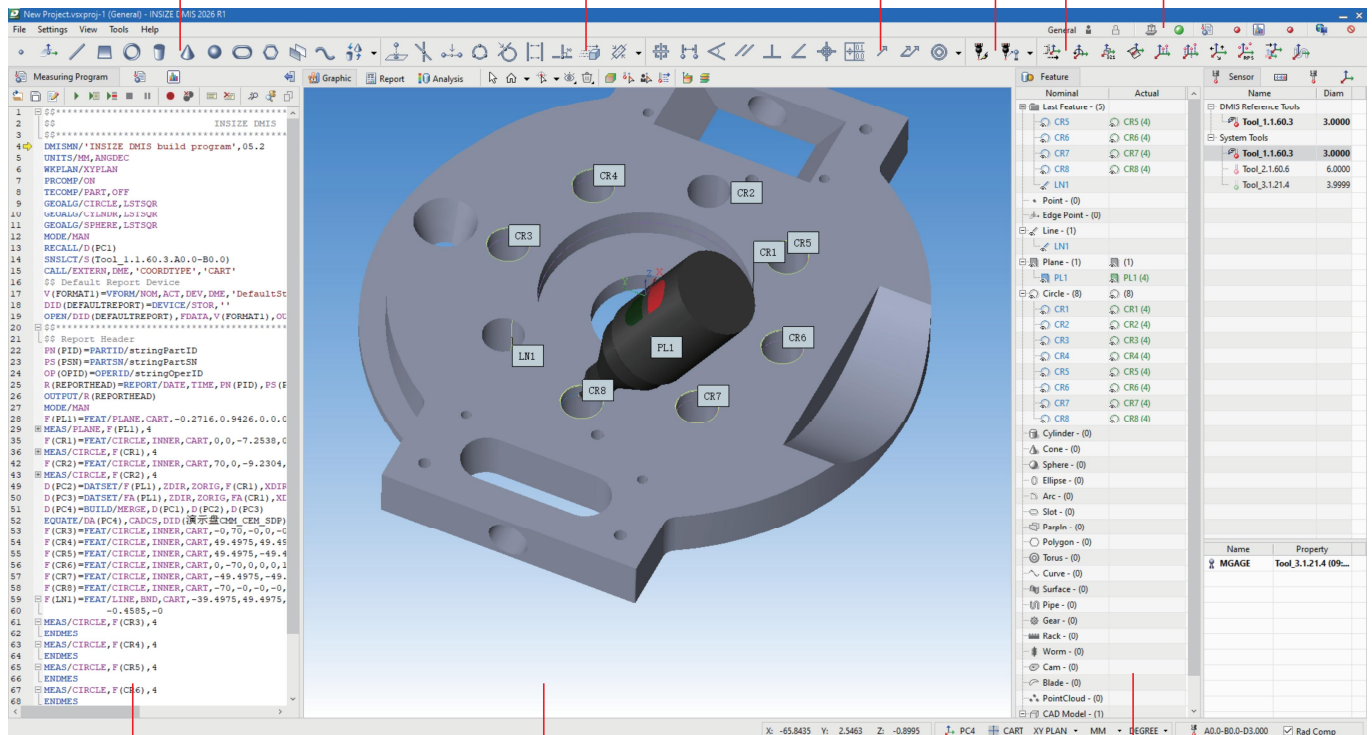
measuring arm (optional) applications



computer (optional)

main toolbar

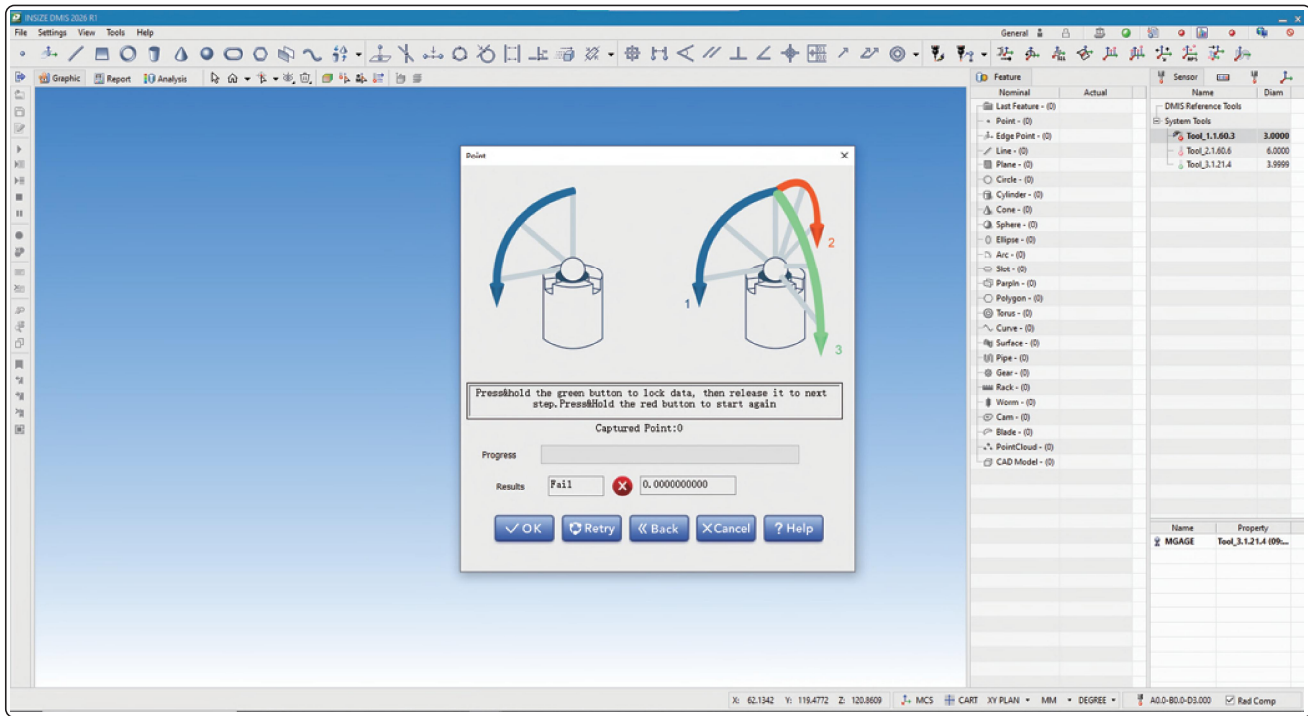
system status



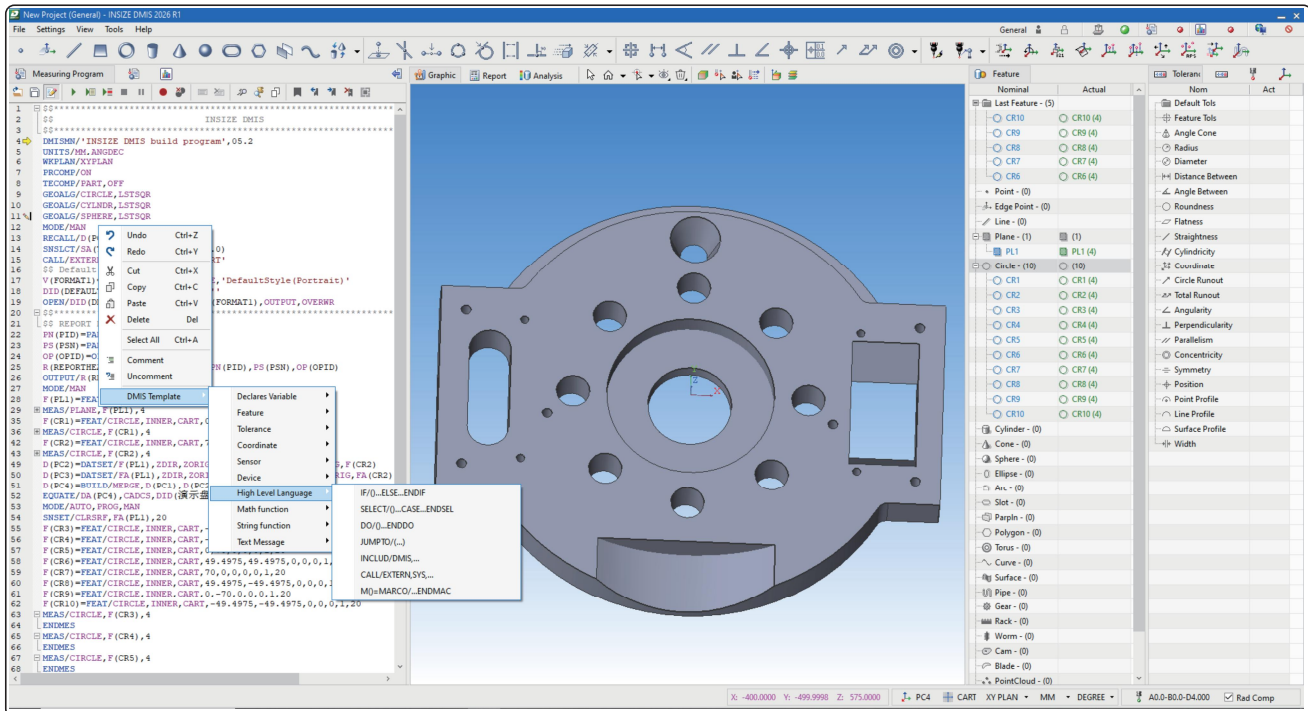
measuring program

integrated display window

element library



probe calibration



advanced programming